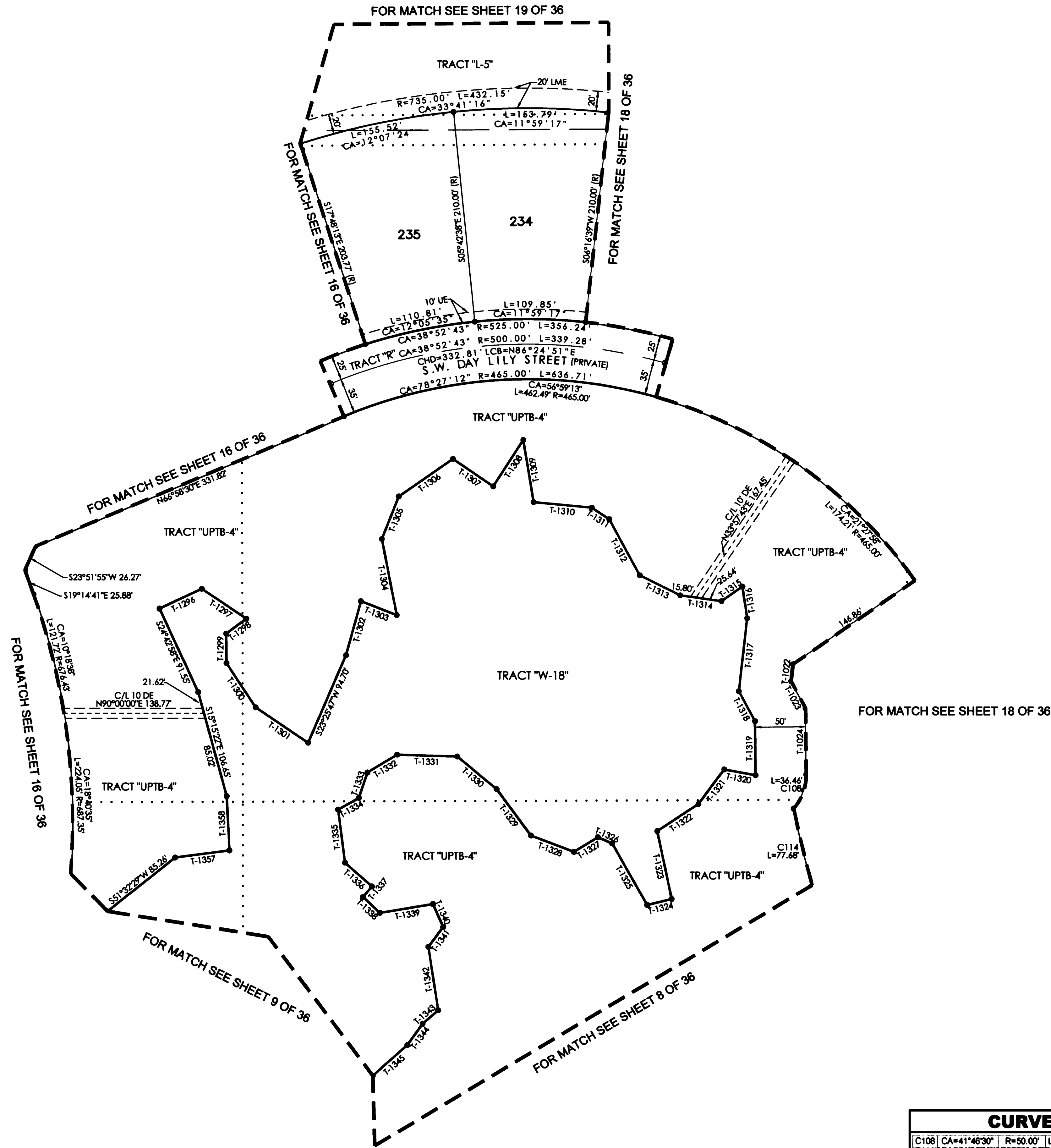
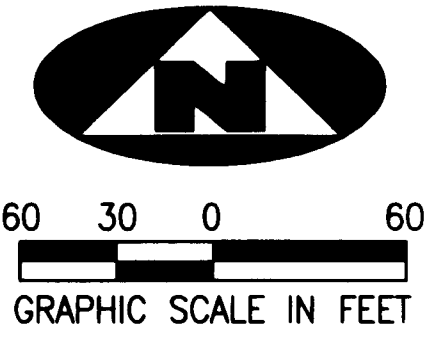


TUSCAWILLA PUD

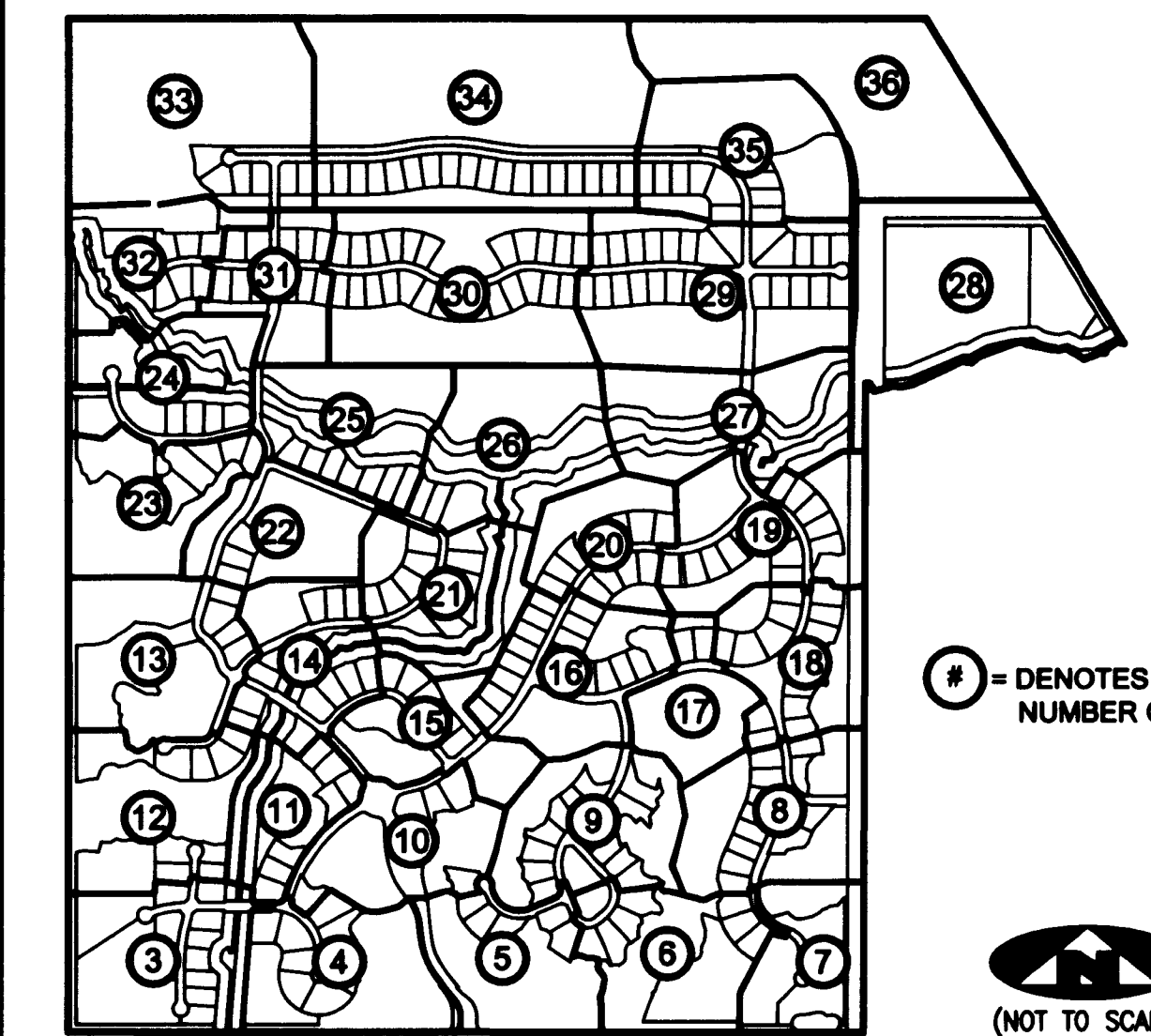
BEING A REPLAT OF A PORTION OF SECTIONS 14 AND 15, TOWNSHIP 38 SOUTH, RANGE 40 EAST, PALM CITY FARMS, RECORDED IN PLAT BOOK 6, PAGE 42, PUBLIC RECORDS PALM BEACH COUNTY (NOW MARTIN COUNTY), FLORIDA, AND BEING A PART OF SECTIONS 10 AND 11, TOWNSHIP 38 SOUTH, RANGE 40 EAST, MARTIN COUNTY, FLORIDA



TANGENT TABLE

T-1022	N06°20'45"E	17.02'
T-1023	N28°13'30"W	30.43'
T-1024	N00°32'25"W	65.78'
T-1296	S64°55'26"W	46.28'
T-1297	N56°12'26"W	53.11'
T-1298	N53°06'30"E	24.99'
T-1299	N00°21'03"W	29.44'
T-1300	N33°22'42"W	52.33'
T-1301	N55°56'14"W	62.75'
T-1302	S15°28'56"W	55.63'
T-1303	N68°46'18"W	37.88'
T-1304	S10°42'45"E	77.38'
T-1305	S21°22'12"W	45.70'
T-1306	S55°01'31"W	65.48'
T-1307	N55°19'30"W	48.33'
T-1308	S32°41'55"W	55.01'
T-1309	N09°22'38"W	62.92'
T-1310	N84°31'53"W	57.82'
T-1311	N56°35'37"W	20.79'
T-1312	N28°03'07"W	63.66'
T-1313	N63°15'29"W	44.85'
T-1314	N82°00'41"W	41.45'
T-1315	S54°41'23"W	25.30'
T-1316	N08°05'09"W	31.84'
T-1317	N06°20'45"E	73.10'
T-1318	N28°13'30"W	33.67'
T-1319	N00°32'25"W	53.46'
T-1320	S79°35'24"E	31.42'
T-1321	N36°57'31"E	42.63'
T-1322	N56°53'55"E	48.79'
T-1323	N12°06'23"W	68.54'
T-1324	N76°56'37"E	25.02'
T-1325	S29°35'48"E	69.67'
T-1326	S66°28'54"E	15.56'
T-1327	N58°42'35"E	27.77'
T-1328	S69°20'35"E	45.49'
T-1329	S36°38'22"E	56.98'
T-1330	S50°13'03"E	50.55'
T-1331	S88°18'24"E	59.49'
T-1332	N58°52'47"E	34.30'
T-1333	N18°44'20"E	26.44'
T-1334	N60°37'49"E	23.63'
T-1335	N07°25'16"W	52.64'
T-1336	N48°35'06"W	35.49'
T-1337	N40°04'37"E	13.63'
T-1338	N47°08'43"W	22.77'
T-1339	S80°42'19"W	53.25'
T-1340	N24°03'23"W	24.82'
T-1341	N36°54'34"E	24.58'
T-1342	N08°50'19"W	63.85'
T-1343	N48°48'55"E	20.42'
T-1344	N35°41'13"E	26.02'
T-1345	N48°12'53"E	45.81'
T-1357	S82°29'09"W	54.23'
T-1358	S03°03'01"E	53.40'

SHEET INDEX



= DENOTES SHEET NUMBER OF 36



(NOT TO SCALE)

CURVE TABLE

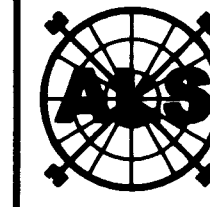
C108	CA=41°46'30"	R=50.00'	L=36.46'	LCB=N20°20'50"E	CHD=35.65'
C114	CA=04°18'01"	R=1035.00'	L=77.68'	LCB=S13°40'48"E	CHD=77.68'

LEGEND

(R)	DENOTES A RADIAL LINE	R	DENOTES RADIUS DISTANCE	□	DENOTES A SET PERMANENT REFERENCE MONUMENT
C/L	DENOTES A CENTERLINE	L	DENOTES ARC LENGTH DISTANCE	4"x4" CONCRETE MONUMENT WITH DISK (LB 7344)	
DE	DENOTES A PRIVATE DRAINAGE EASEMENT	CA	DENOTES CENTRAL ANGLE	●	DENOTES A 5/8" IRON ROD AND CAP (LB 7344)
UE	DENOTES UTILITY EASEMENT	LCB	DENOTES LONG CHORD BEARING	⊙	DENOTES A SET PERMANENT CONTROL POINT
LSE	DENOTES LIFT STATION EASEMENT	CHD	DENOTES CHORD DISTANCE	⊙	CARRIAGE BOLT AND WASHER (LB 7344)
MCAE	DENOTES MARTIN COUNTY ACCESS EASEMENT	ORB	DENOTES OFFICIAL RECORDS BOOK	⊙	DENOTES A FOUND PERMANENT CONTROL POINT
FM	DENOTES FOREMAIN EASEMENT	DENOTES TRACT LINE OF THE PLAT OF PALM CITY FARMS PLAT BOOK 6, PAGE 42.	⊙	CARRIAGE BOLT AND WASHER
LME	DENOTES LAKE MAINTENANCE EASEMENT				

SURVEYOR'S NOTES

1. THE BASE BEARING, AS SHOWN HEREON, IS N89°58'48"W ALONG THE SOUTHWEST CORNER OF THE SOUTHWEST ONE-QUARTER OF SECTION 15, TOWNSHIP 38 SOUTH, RANGE 40 EAST.
2. IN THOSE INSTANCES WHERE UTILITY OR DRAINAGE STRUCTURES ARE CONSTRUCTED IN CONFLICT WITH THE PLATTED PERMANENT CONTROL POINT POSITION STRADDLERS MONUMENTED AS PERMANENT CONTROL POINTS WILL BE SET TO REFERENCE THE PLATTED POSITION.
3. LINES THAT INTERSECT CURVES ARE RADIAL UNLESS OTHERWISE NOTED.
4. THIS INSTRUMENT WAS PREPARED BY WM. R. VAN CAMPEN, PROFESSIONAL SURVEYOR AND MAPPER NO. 2424, IN AND FOR THE OFFICES OF ASSOCIATED LAND SURVEYORS, INC., 4152 WEST BLUE HERON BOULEVARD, SUITE 121, RIVIERA BEACH, FLORIDA, 33404



ASSOCIATED LAND SURVEYORS, INC.
 4152 W. BLUE HERON BOULEVARD—SUITE 121
 RIVIERA BEACH FLORIDA 33404 LB 7344
 PHONE: (561) 848-2102 FAX: (561) 844-9659 EMAIL: ALLSURVEY@AOL.COM

FILE: P260PLAT

FB:	WO.NO.: P260
SCALE: 1"=80'	DATE: 1/8/2005
DWN: KVC	SHEET 17 OF 36